


TOP BUSHING

keep it moving 



PCM TOP BUSHING* is a specific accessory for PCP completion to land the rotor properly during installation. The PCM TOP BUSHING is used in any PCP completions and is an embedded solution in stator discharge. The TOP BUSHING is a key item in completion for spacing out and maximizes PCP inflow.

» BENEFITS

- Serve as a landing spot for space out
- Maximize flowing area to ensure a reliable pump suction
- Embedded solution in stator, no need for additional intervention or dedicated tools to ensure synchronization
- Cost effective solution
- Useful with or without paddle rotors

* Product not available for Canada and USA



Artificial Lift Solutions

› OPERATION

Top bushing plates are used for Spacing out installation and are located at PCP discharge marked with a 'UP' sign.

Spacing out operation remains identical except that 20 cm margin in addition of the rod stretch elongation is sufficient.

› SPECIFICATIONS

Material:
- S355JR

Design load:

PUMP SIZE	MAX ALLOWABLE LOAD (F)
2" 3/8	5 T
2" 7/8	6.5 T
3" 1/2	8 T
4"	8 T
5"	9.5 T



› LIST OF AVAILABLE ITEMS

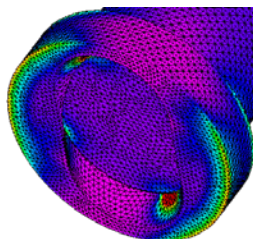
Available for PCM Moineau™, PCM Moineau™ HR, TOP BUSHING codification uses standard PCP code ended with B.

Example:

- 060E120P159AA : 60E1200 STATOR (159), 4' NUE PIN/PIN
- 060E120P159AAB : 60E1200 STATOR **TOP BUSHING** (159), 4' NUE PIN/PIN

› FEATURES

Maximum load checked by FEA and load test



› INSTALLATION

PCM TOP BUSHING is an embedded solution that requests no additional work on site.

Just ensure that 'UP' mark is located at PCP discharge during installation.



› MAINTENANCE

As long as the top bushing is not damaged, it can be re-used.

› PRECAUTIONS OF USE

Inside PCM Moineau™ Range, some TOP BUSHING PCP are not compatible with all rotor sizes.

PCP SERIES	PCP MODEL	ROTOR COMPATIBILITY
2" 3/8	3E	≥ W02
	6E	≥ W04
	16E	≥ W05
2" 7/8	13E / 48E	≥ W01
	22E	≥ W02
3" 1/2	12E / 24E / 32E / 40E	≥ W01
	63E	≥ W04
4"	60E / 80E	≥ W01
	45E / 100E / 120E / 160E	≥ W04
	38E	≥ W06
5"	86E / 115E / 150E / 200E	≥ W01