
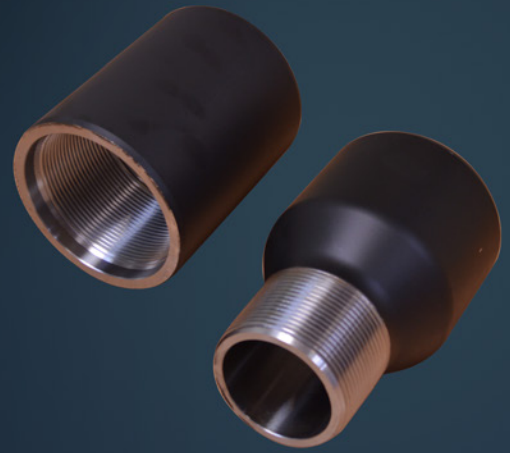


CROSS OVERS

CONNECT TUBING STRING ACCESSORIES

keep it moving 



PCM cross overs are essential in a PCP completion to connect any Bottom Hole Assembly BOX and / or PIN and whatever the sizes and thread types.

All PCM tubular couplings are following the API 5B / 5 CT for threads connections. PCM is proposing as a standard the most popular raw material type J55.

▶ ALL CROSS OVER CONFIGURATION AVAILABLE

- BOX / BOX
- BOX / PIN
- PIN / BOX
- All threads connections as per API 5CT from 2"3/8 to 6"5/8



Artificial Lift Solutions

► SPECIFICATIONS

Item are delivered:

- painted
- with plastic plugs when required (PIN threads)
- grease on threads

► LIST OF AVAILABLE ITEMS

CROSS OVERS (TUBULAR COUPLINGS)

List of items for PCM Moineau™, PCM Slugger and PCM Vulcain™.

	TOP CONNECTION	BOTTOM CONNECTION	CODE
REGULAR COUPLINGS	3"1/2 EU BOX	4" NU BOX	XOA400Y312PT
	4"1/2 EU BOX	5" CSG BOX	XOA500P412PT
	4"1/2 EU BOX	6"5/8 BUT PIN	XOC412T658PT
	4"1/2 NU BOX	6"5/8 BUT PIN	XOC412S658PT
	2"7/8 EU BOX	2"3/8 EU BOX	XOA278V238PT
	3"1/2 EU BOX	2"3/8 EU BOX	XOA312V238PT
	2"7/8 EU BOX	2"7/8 EU BOX	XOA278V278PT
	3"1/2 EU BOX	2"7/8 EU BOX	XOA312V278PT
	3"1/2 EU BOX	3"1/2 EU BOX	XOA312V312PT
	4"1/2 EU BOX	3"1/2 EU BOX	XOA412V312PT
	4" NU BOX	4" NU BOX	XOA400W400PT
	4"1/2 EU BOX	4" NU BOX	XOA412X400PT
	4"1/2 NU BOX	4" NU BOX	XOA412W400PT
	5" CSG BOX	5" CSG BOX	XOA500Q500PT
	5"1/2 CSG BOX	5" CSG BOX	XOA512Q500PT

	TOP CONNECTION	BOTTOM CONNECTION	CODE
OTHER COUPLINGS AVAILABLE UPON REQUEST	2"7/8 NU BOX	2"3/8 EU BOX	XOA278Y238PT
	2"7/8 NU BOX	2"7/8 EU BOX	XOA278Y278PT
	2"7/8 EU PIN	2"3/8 EU BOX	XOD278V238PT
	3"1/2 NU BOX	2"7/8 NU BOX	XOA312W278PT
	3"1/2 NU BOX	3"1/2 NU BOX	XOA312W278PT
	3"1/2 EU BOX	2"7/8 EU PIN	XOC312V278PT
	3"1/2 NU BOX	3"1/2 EU BOX	XOA312Y312PT
	5" CSG BOX	4"1/2 EU BOX	XOA500P412PT
	2"7/8 EU PIN	2"7/8 EU BOX	XOD278V278PT